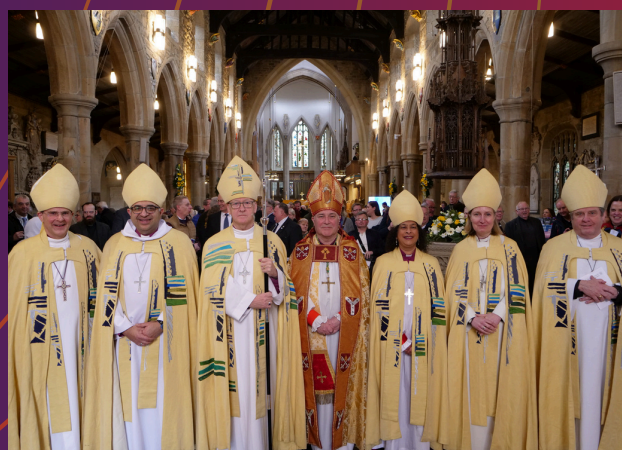




 THE CHURCH OF ENGLAND  
Diocese of Leeds

**Loving.**  
**Living.**  
**Learning.**

**PARISH SHARE 2025**



# An Introduction from Bishop Nick

**The Diocese of Leeds is now ten years old. I am incredibly thankful to everyone who helped establish the Diocese and I'm very confident about our future as we go forward together.**

In this guide, you'll find details that illustrate ministry by remarkable people in all settings from inner cities to small market towns, and villages. There are lots of statistics, but these are not numbers for numbers' sake. They show the church engaging in the real stuff of people's lives.

This is the Church of England at work on the ground and to do this, we have to be able to resource it.

Parish Share is our largest source of funding by far. All the money received through Share is spent directly on having clergy in our parishes. In 2023, Parish Share provided £12.1 million of our total income of £20.4 million, but that was £1.8 million below the figure received in 2019. Still bearing the cost of COVID and in tough economic times, the Diocese has a rolling deficit of £1.3 million.

Currently, we balance the books by selling properties, using reserves and constantly reducing operating costs. This is obviously not sustainable, and so we encourage everyone to be generous in order that we can shape parish ministry positively into the future.

For a decade we have worked to create confident Christians, because they will grow churches, and help transform society. In a complicated world, that's the simple dynamic - confident Christians, growing churches, transforming communities.

Our missional initiative, Barnabas: Encouraging Confidence, is not a tick-box exercise to make us feel better. It's about asking, "What do you need to grow in confidence so that your church can grow, so that we can achieve more in our parishes?" Every parish is unique, and Barnabas, supported by the national church, aims to meet your specific needs with real help and advice.

We know the challenges, but above all, I'm hugely confident of the opportunities for the gospel of Jesus Christ in our special part of the world.

Thank you for your generosity and your giving. Thank you for all the mission and service in the Diocese of Leeds. I pray that God will bless you as we work together for the sake of the kingdom of God in this place.



# Your Contribution is *Essential*



When we give through Parish Share, we actively enable the life and ministry across our Episcopal areas. Every pound received in Parish Share supports ministry in all of your parishes and communities, as well as those of your neighbours across our Diocese. Thank you for your generous contributions.

*Together, we invest in a shared vision of welcome, support, and growth in faith.*



Click [here](#) to see a video message from Bishop Nick about Parish Share

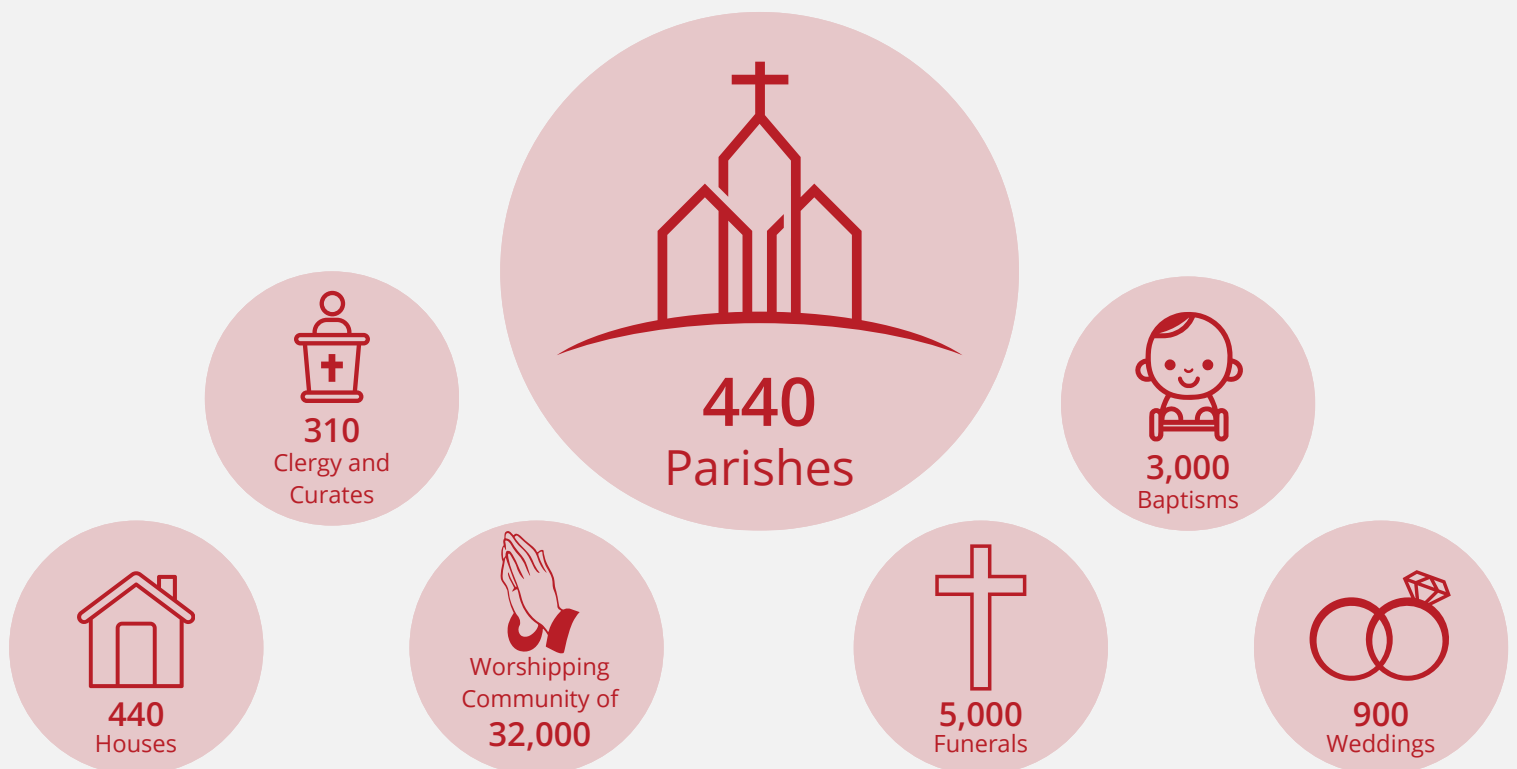
# Supporting Our Ministry in 2025

In 2025 we expect to spend £22.1m, of which £16.4m will be on front line parish clergy and their homes. We aim to raise £12.3m through Parish Share, which will cover 75% of the cost of parish clergy. The remainder is covered by other income sources such as National Church grants, parochial fees, investment income and rental income.

Your generosity is vital to sustain and nurture the ministry work of clergy in your parishes and others across our Diocese.



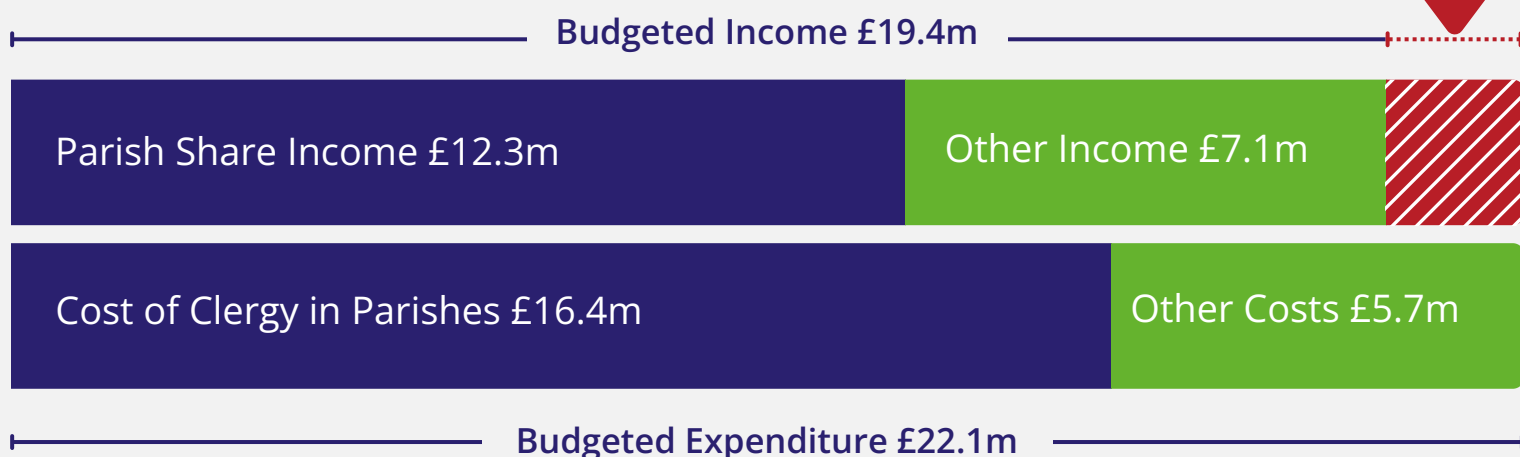
## Together Our Generosity Supports



# 2025 Parish Share Budget

The 2025 budget estimates income of £19.4m against expenditure of £22.1m, with the deficit funded by the use of diocesan reserves and property sales. In addition to Parish Share, our primary sources of income are National Church grants, rental income, dividends and interest on investments, and parochial fees.

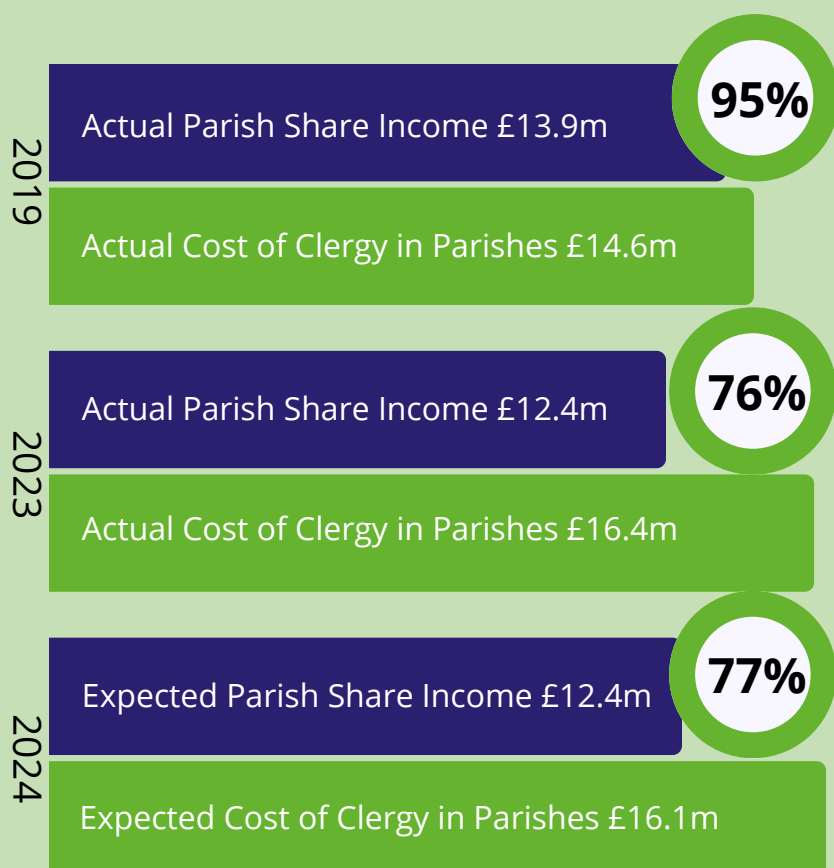
A £2.7m deficit will be covered by utilising existing reserves and the proceeds from property sales.



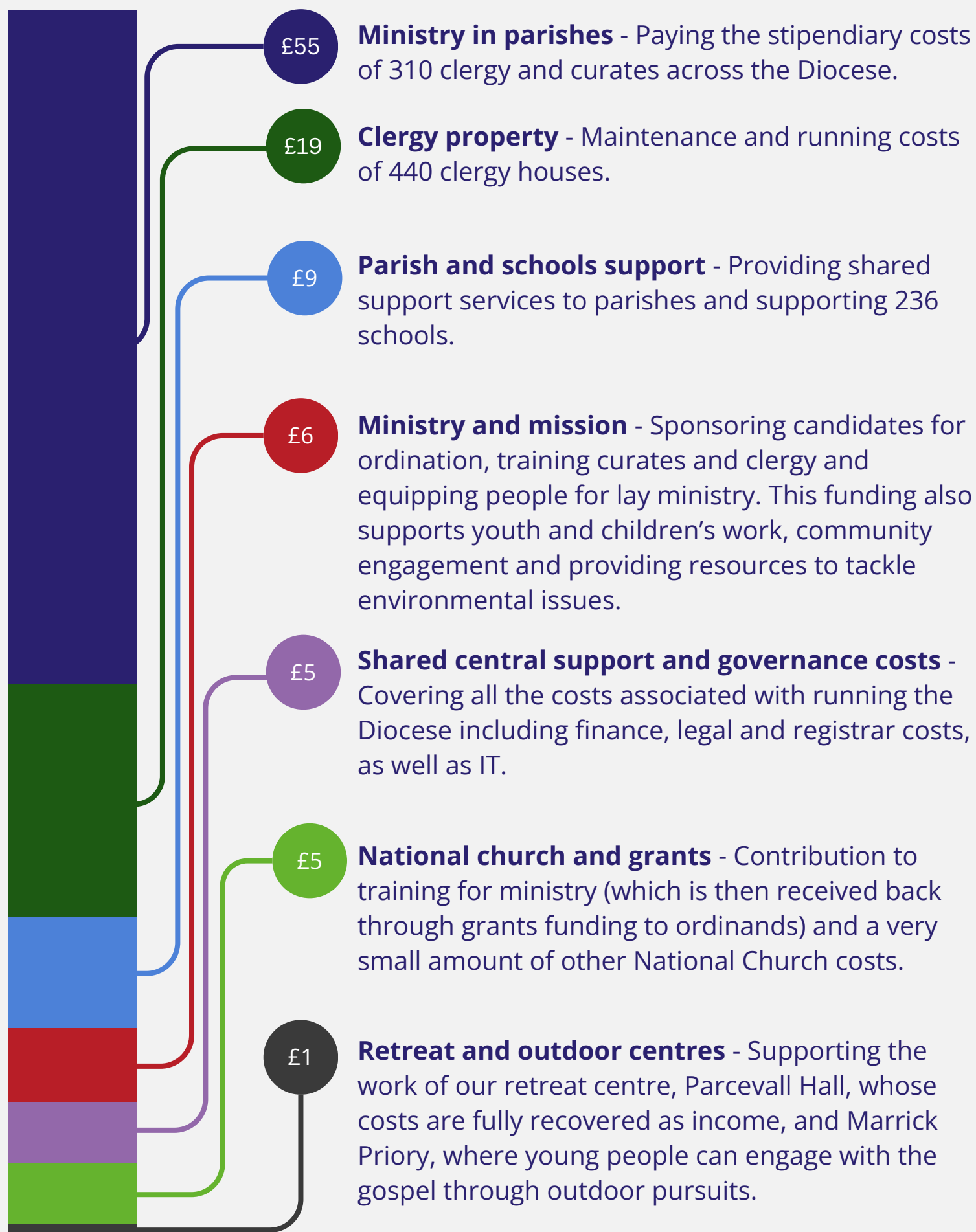
A copy of our latest annual report and financial statement can be found [here](#).

In 2019 Parish Share contributions covered 95% of the cost of clergy in our parishes.

The lower level of Parish Share received post COVID-19 means that income alone, even with additional revenue from Diocesan investments and property sales, is insufficient to cover clergy costs. Therefore, to deliver the level of ministry we desire, we are increasingly reliant on utilising our limited reserves and proceeds from property sales to bridge the gap each year.



# How is every £100 of our Diocesan Budget Spent?



# How is Parish Share Calculated?

Your Parish Share is calculated using a formula which is built on the factors below



## **Clergy Deployment**

The majority (two thirds) of the request is driven by the allocation of clergy, with total share split by the number of clergy roles in the Diocese.



## **Church Attendance**

The remainder is driven by the Usual Sunday Attendance, with total share split by total attendance across the Diocese to give an average cost per attendee.



## **Socio Economic**

The combined Clergy Deployment and Attendance Factors are then reduced or increased based on the relative deprivation of your parish.

The above can then be adjusted by additional caps depending on your parish's context. For a more detailed explanation please visit: [leeds.anglican.org/parish-share-explained](https://leeds.anglican.org/parish-share-explained)

# Common Questions

## Why do we need to pay Parish Share when the Church of England is so wealthy?

Compared to many charities the Church of England does have significant resources, whether that be at a national, diocesan or parish level. The Church Commissioners manage the national funds and, either directly or through the Archbishops' Council, are providing £1.2bn of funding over the 2023-25 triennium. This funding directly covers bishops' and archbishops' ministry, cathedrals, and some clergy pension costs. Funding to dioceses includes Lowest Income Communities Funding, which helps support stipendiary ministry in the most deprived parts of the diocese, and the Strategic Mission and Ministry Investment programme (which replaced Strategic Development Funding). In 2023 we received £4.4m from the National Church, however, a large proportion of this funding was restricted, which means we continue to need Parish Share to fund much of our work.



## What do we mean by cost of clergy in parishes?

The cost of clergy in parishes refers to the amount spent on stipends, national insurance, pensions, and clergy housing. This includes the cost of training curates, which is not directly charged to the parishes in which they serve but shared across the whole Diocese. It also includes the cost of casual duty fees paid to retired clergy when they take services.



# Common Questions

Why do we make Parish Share contributions when we haven't got a vicar?



All Parish Share contributions are pooled together to ensure that every parish, across the Diocese, regardless of its individual wealth or size can sustain its mission and ministry. Although your parish may currently be without a vicar, your gift will help to sustain all of our parishes, enabling clergy to reach out into the hearts of those served by the Church of England in every community. In this way we support each other practically, spiritually and financially and together we invest in a shared vision of welcome, support, and growth in faith.

What is the Diocese doing to lower its central costs?



The Diocese of Leeds operates with lower central costs than most other Dioceses. Costs in 2023 were £1.5m lower than in 2018. Additional savings made since COVID-19 through reduced staffing levels and other efficiency savings, mean that despite the high inflation of recent years our costs remain below pre-pandemic levels. Additionally, we make every effort to access other funding sources (e.g. National Church grants) to ensure support costs in the unrestricted budget are kept as low as possible.

# Support from the Stewardship Team



**Jennifer Robinson**

Parish Support Accountant

**Beth Vickers-Smith**

Stewardship Officer

**Janet Edmond**

Senior Stewardship Officer

We support parishes throughout the Diocese by providing the tools to build and maintain a generous culture in response to God's generosity to us. This is essential for every church to develop sustainable ministry, and also to understand and meet their Parish Share.

Creating an environment of sustained generosity can be difficult. We're here to help you in your journey towards building a generous church and deepening Christian discipleship.

For enquiries relating to Parish Finance, Stewardship & Income Generation please email:

[resourcingparishes@leeds.anglican.org](mailto:resourcingparishes@leeds.anglican.org)

Please follow the links below to discover the types of support we can offer PCCs, Treasurers & Clergy.

[Treasurer Support](#)

[Stewardship and Income Generation](#)

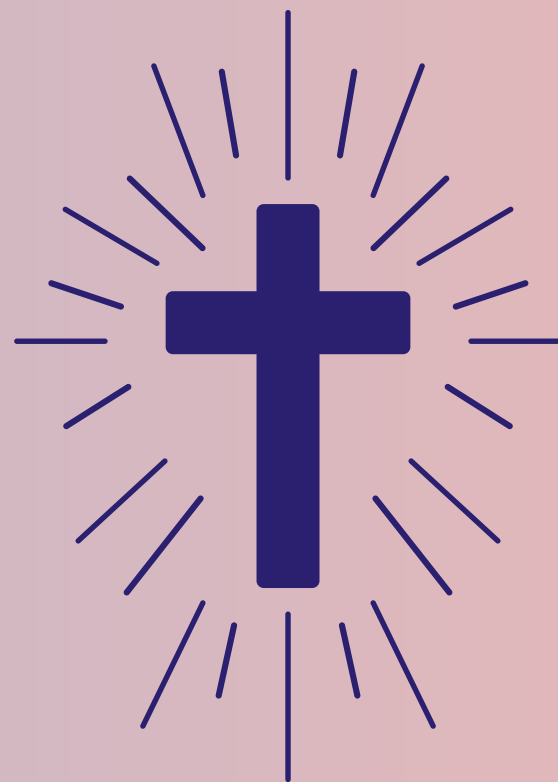
[Parish Giving Scheme](#)



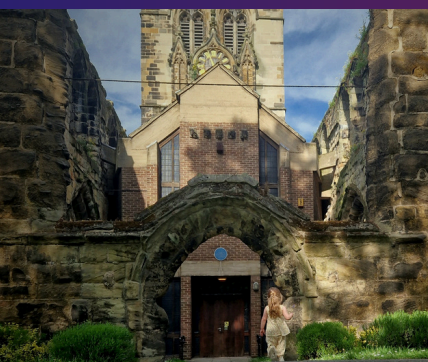
For more helpful resources please scan the QR code or visit [linktr.ee/resourcingparishes](https://linktr.ee/resourcingparishes)

# A Prayer of Giving

Enfold us, Lord,  
in the depths of your love  
and the freedom of your grace;  
give us the same joy in your love  
that you feel in giving yourself to us  
every day, every hour, every moment.  
Guide us to embrace that same joy  
in the ways we give of ourselves;  
our money, our motives, our means;  
to share in your mission of love  
to church, community and creation.  
Amen.



by the Ven Bill Braviner, Archdeacon of Halifax



## Thank You

Thank you for your generous giving, which helps our churches  
to develop sustainable ministry, grow worship and transform  
communities across the Diocese of Leeds.